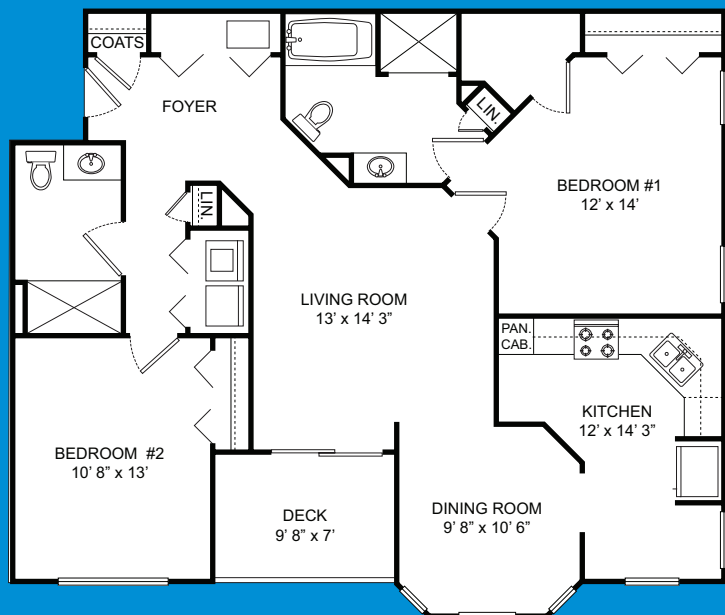


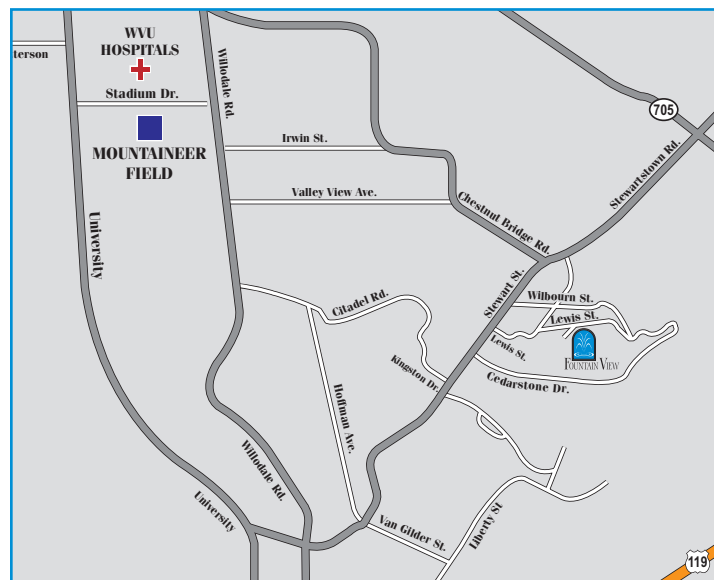
2 BEDROOM, 2 BATH, 1142 SQ. FT.

# THE CASCADE



## FOUNTAIN VIEW

100 FOUNTAIN VIEW  
 MORGANTOWN, WV 26505  
 P: 304.599.1112  
 WWW.LIVEATFOUNTAINVIEW.COM



### COMMUNITY FEATURES

- STATE-OF-THE-ART FITNESS CENTER
- RESORT-STYLE SWIMMING POOL
- LARGE CLUBHOUSE AND CONFERENCE ROOM
- EXECUTIVE BUSINESS CENTER WITH COPIER AND FAX MACHINES
- INDIVIDUAL GARAGE PARKING WITH AUTOMATIC OPENERS AVAILABLE
- SEPARATE STORAGE FACILITIES AVAILABLE
- ELEVATOR WITH BATTERY BACK-UP SYSTEM
- ELEGANTLY APPOINTED HALLWAYS
- 24-HOUR SECURITY CAMERAS IN HALLWAYS AND PARKING AREAS
- FIRE PULL STATIONS WITH AUTOMATIC ZONED FIRE DEPT. NOTIFICATION
- SPRINKLER SYSTEM THROUGH OUT
- FIRE DOORS WITH PANIC HARDWARE
- LARGE GUEST PARKING AREA
- ENCHANTING FOUNTAINS AND LUSH LANDSCAPING

All rights, floor plans, prices and amenities are subject to change.  
 "This is not an offer to sell a common interest unit. That offer may only be made after delivery of a public offering statement to a prospective purchaser"

### HOME FEATURES

- DISTINCTLY UNIQUE FLOOR PLANS
- 9-FOOT CEILINGS
- BRAZILIAN GRANITE KITCHEN COUNTERTOPS
- DESIGNER SILVER KITCHEN APPLIANCE PACKAGE
  - SIDE-BY-SIDE REFRIGERATOR WITH THRU THE DOOR ICE/WATER
  - GLASS-TOP SELF-CLEANING STOVE
  - MICROWAVE
  - DISHWASHER
- DISPOSAL
- CERAMIC TILE IN BATHS
- JETTED SPA TUBS IN SELECT HOMES
- DOUBLE BOWL SINK VANITIES IN SELECT HOMES
- LARGE WALK-IN CLOSETS
- IMPORTED SWEDISH ASKO WASHER & DRYERS
- LAMINATED WOOD FLOORING
- SUNROOMS IN SELECT HOMES
- PRIVATE TILED BALCONIES WITH CEILING FANS
- UPGRADED BRUSHED NICKEL LIGHT FIXTURES
- VAULTED CEILINGS ON ALL TOP FLOOR HOMES